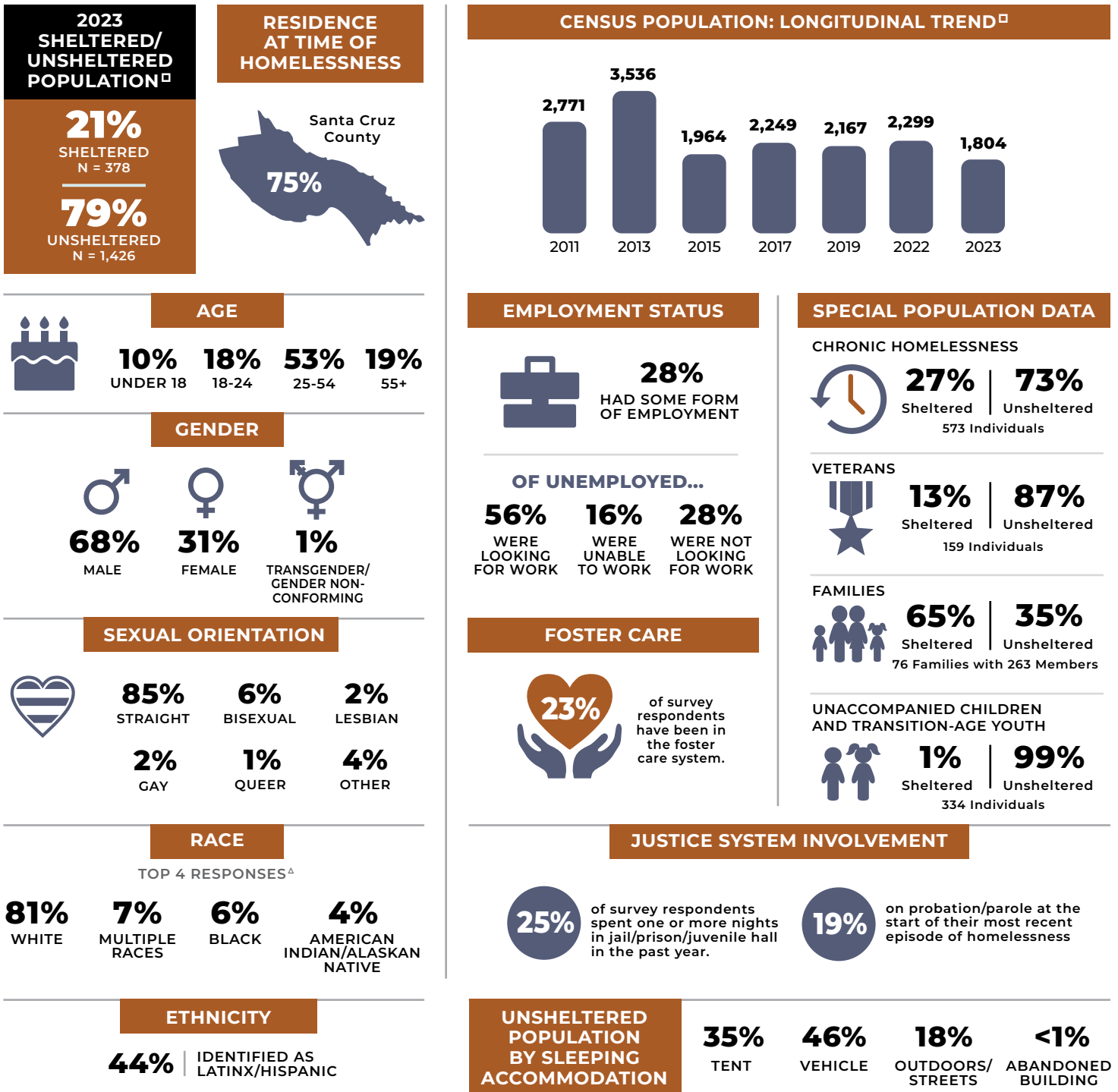


# SANTA CRUZ COUNTY

## 2023 HOMELESS POINT-IN-TIME COUNT & SURVEY

Every two years, typically during the last 10 days of January, communities across the country conduct comprehensive counts of the local homeless populations in order to measure the prevalence of homelessness in each local Continuum of Care.

The 2023 Santa Cruz County Point-in-Time Count was a community-wide effort conducted on February 23rd, 2023. In the weeks following the street count, a survey was administered to 416 unsheltered and sheltered individuals experiencing homelessness in order to profile their experience and characteristics.



### PRIMARY CONDITION THAT LED TO HOMELESSNESS+

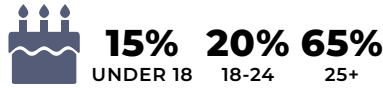
TOP 6 RESPONSES<sup>Δ</sup>

|  |  |
|--|--|
| <b>35%</b><br>LOST JOB                             | <b>24%</b><br>SUBSTANCE USE                      |
| <b>19%</b><br>EVICTION                             | <b>13%</b><br>DIVORCE/<br>SEPARATION/<br>BREAKUP |
| <b>11%</b><br>ARGUMENT<br>WITH FAMILY<br>OR FRIEND | <b>10%</b><br>FAMILY/<br>DOMESTIC<br>VIOLENCE    |

### FIRST EPISODE OF HOMELESSNESS



### AGE AT FIRST EPISODE OF HOMELESSNESS

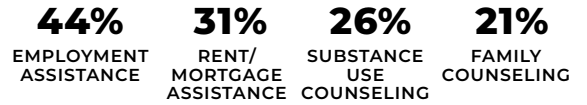


### DURATION OF CURRENT EPISODE OF HOMELESSNESS



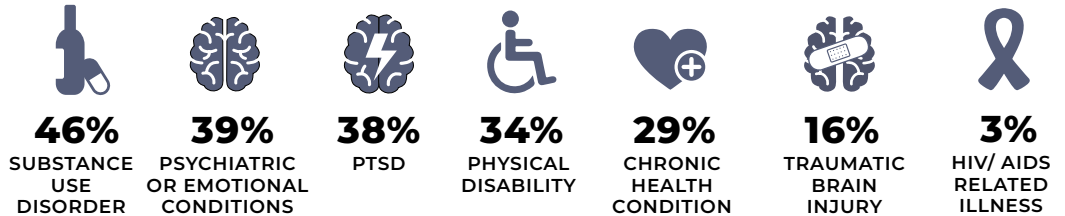
### WAYS TO PREVENT LOSING HOUSING+

TOP 4 RESPONSES<sup>Δ</sup>



### SELF REPORTED HEALTH+

Current health conditions that may affect the housing stability or employment of those experiencing homelessness.

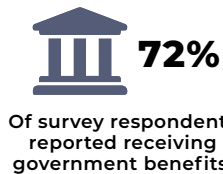


### DISABLING CONDITIONS

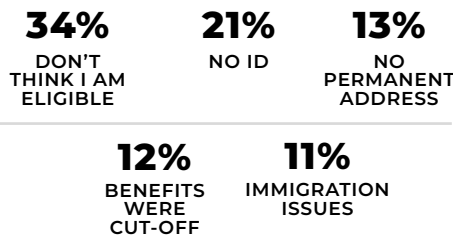


A disabling condition is defined by HUD as a developmental disability, HIV/AIDS, or a long-term physical or mental impairment that impacts a person's ability to live independently but could be improved with stable housing.

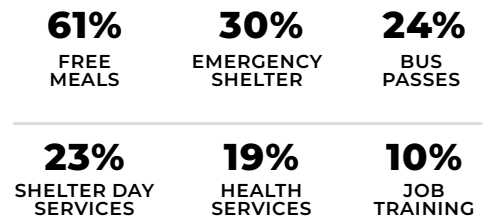
### GOVERNMENT SERVICES AND ASSISTANCE



### REASONS FOR NOT RECEIVING ANY GOVERNMENT ASSISTANCE+ Top 5 Responses<sup>Δ</sup>



### SERVICES CURRENTLY ACCESSING+ Top 6 Responses<sup>Δ</sup>



### SUBPOPULATION DEFINITIONS

**CHRONICALLY HOMELESS**  
An individual with one or more disabling conditions, or a family with a head of household with a disabling condition, who:  
» Has been continuously homeless for one year or more and/or;  
» Has experienced four or more episodes of homelessness totaling twelve months, within the past three years.

**VETERANS**  
Persons who have served on active duty in the Armed Forces of the United States. This does not include inactive military reserves or the National Guard unless the person was called up to active duty.

**FAMILIES**  
A household with at least one adult member (persons 18 or older) and at least one child member (persons under 18).

**UNACCOMPANIED TRANSITION-AGE YOUTH**  
Youth under the age of 18 and young adults from the ages of 18 to 24 years old (TAY) who are experiencing homelessness and living without a parent or legal guardian.

+ Multiple response question, results may not add up to 100%.  
Δ Only displaying top responses, all response data will be available in full report.  
▣ Sourced from census data rather than survey data.  
Note: Some percentages have been rounded so total percentage will equal 100%.

The complete comprehensive report includes a more detailed profile of the characteristics of those experiencing homelessness in Santa Cruz County. It will be available summer 2023.  
Source: Applied Survey Research, 2023, Santa Cruz County Homeless Census & Survey, Watsonville, CA.